

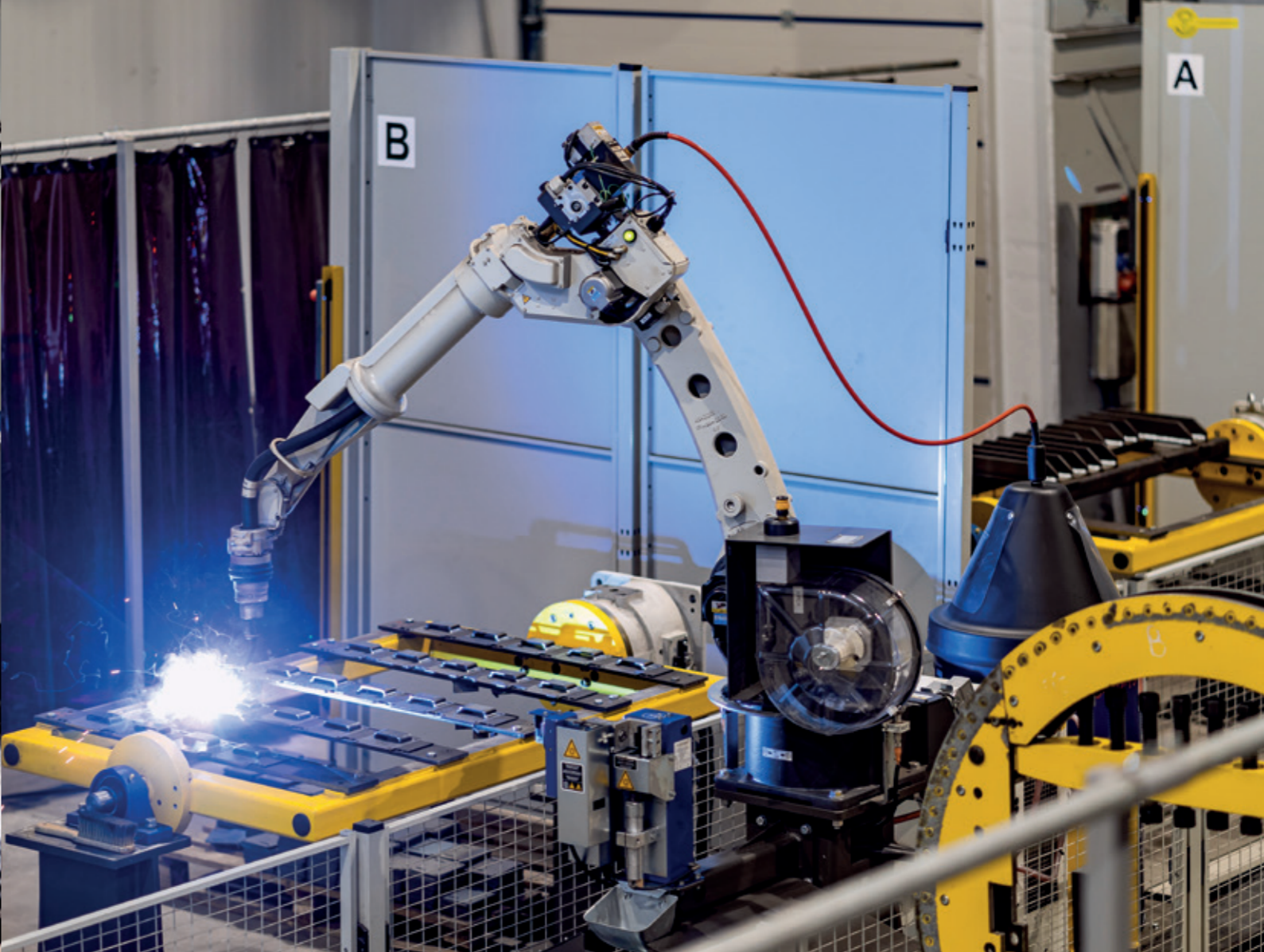
DEMARKO. MILITARY VEHICLES

70W18EIII
2023



We are
ready
for any
mission





Modern production solutions

We rely on optimized production processes, state-of-the-art technology and highly qualified employees. Our constantly expanding machine park currently consists of over 40 modern CNC machines. Such a rich equipment and technological background, as well as the systematic retrofitting of production stations with tools and control equipment, set the highest standards to guarantee the End User an excellent quality of our vehicles.

Tailor-made solutions

Our experience, flexibility and well-established technical expertise allow us to offer solutions perfectly suited to any transportation task. Knowledge and expertise – from design to production, from the beginning to the end. We will provide you with the best solution tailored to your transportation task.

Automation and robotization

The degree of automation and robotization are key determinants of the production process innovativeness. Complementing each other, they provide us with the possibility of faster, more accurate and safer production processes as well as cost optimization. The cooperation of machines with automation and software is a key element that gives employees the ability to focus on their core tasks, and guarantees clients reliable *just-in-time* deliveries.

Industry and artificial intelligence

Internet of Things (IoT) everything communicates with everything. It's an in-depth digital transformation and automation of production processes, covering the entire supply chain: from placing an order and delivering components for ongoing production, to shipping the goods to clients and after-sales services. The intelligent process control network contributes to significant process optimization and provides access to practically every useful information about the production process at any time and from any place. By implementing artificial intelligence solutions, we have the ability to increase the production efficiency while reducing its costs, thus we are able to respond flexibly to clients' needs.

Re-designed

Medical compartment optimized so that the crew has as much space as possible at their disposal.

On top of that, everything you need is on board:

- oxygen cylinders
- respirator
- defibrillator
- IV fluid holders
- washbasin
- standard 230V sockets for powering medical equipment
- efficient air conditioning
- independent heating
- plenty of space for necessary medical equipment

If necessary, the container's space can be adapted to carry seven people (including two people lying down).



Comfort and reliability

Comfortable seats in the driver's cabin, automatic air conditioning, independent heating and cruise control.

The new MUV combines unparalleled off-road capability with the comfort of modern cars.

An additional battery allows for reliable starting even in extremely low temperatures.

The electrical system is adapted to meet the NO-06-A200:2012 standard for electromagnetic emissions.

New furniture system

An additional entrance with a sturdy handle, which makes it easier to get inside even with heavy equipment.

A newly developed furniture system, with large, spacious cabinets and large convenient doors.

Gentle embossing and rounded shapes help keep the medical space impeccably clean.

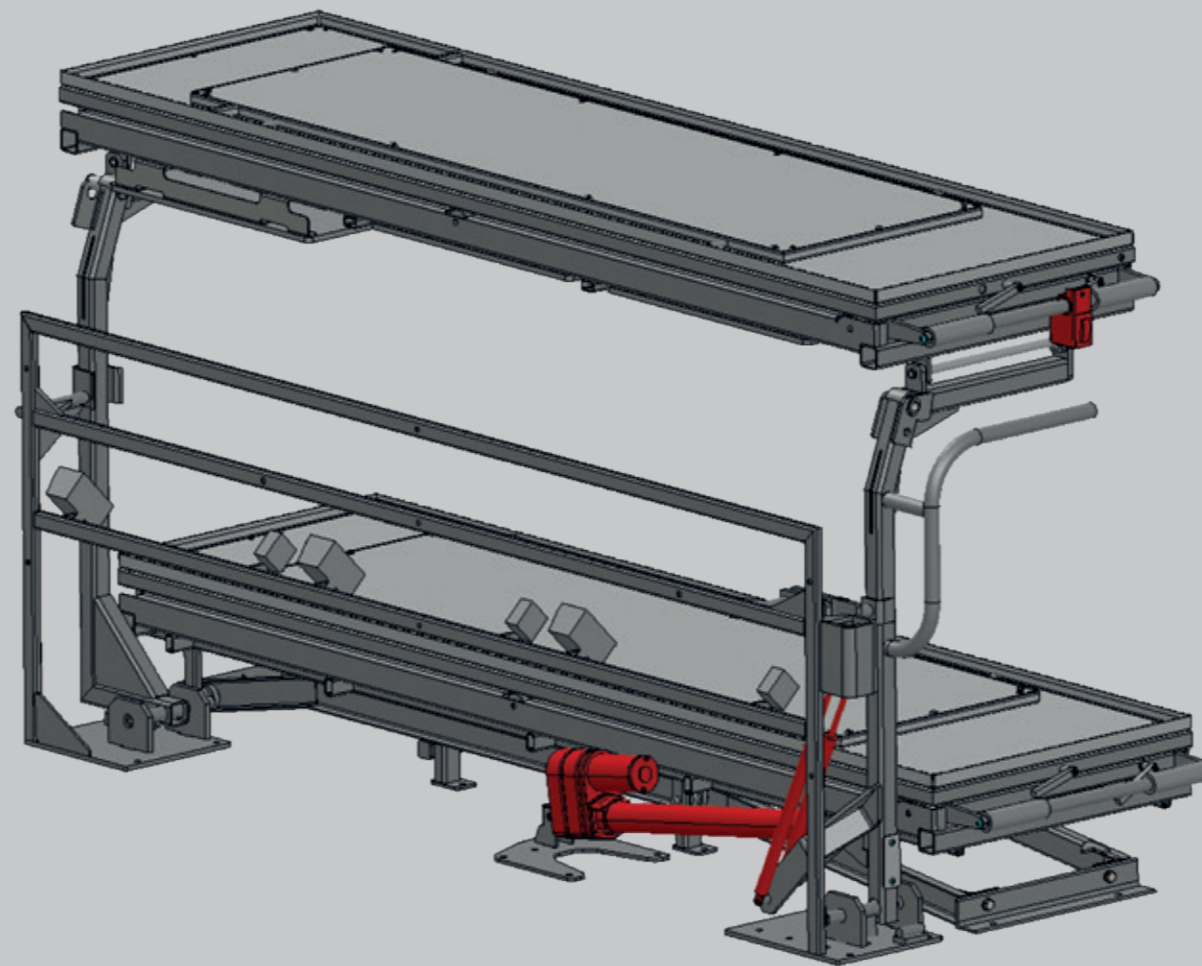
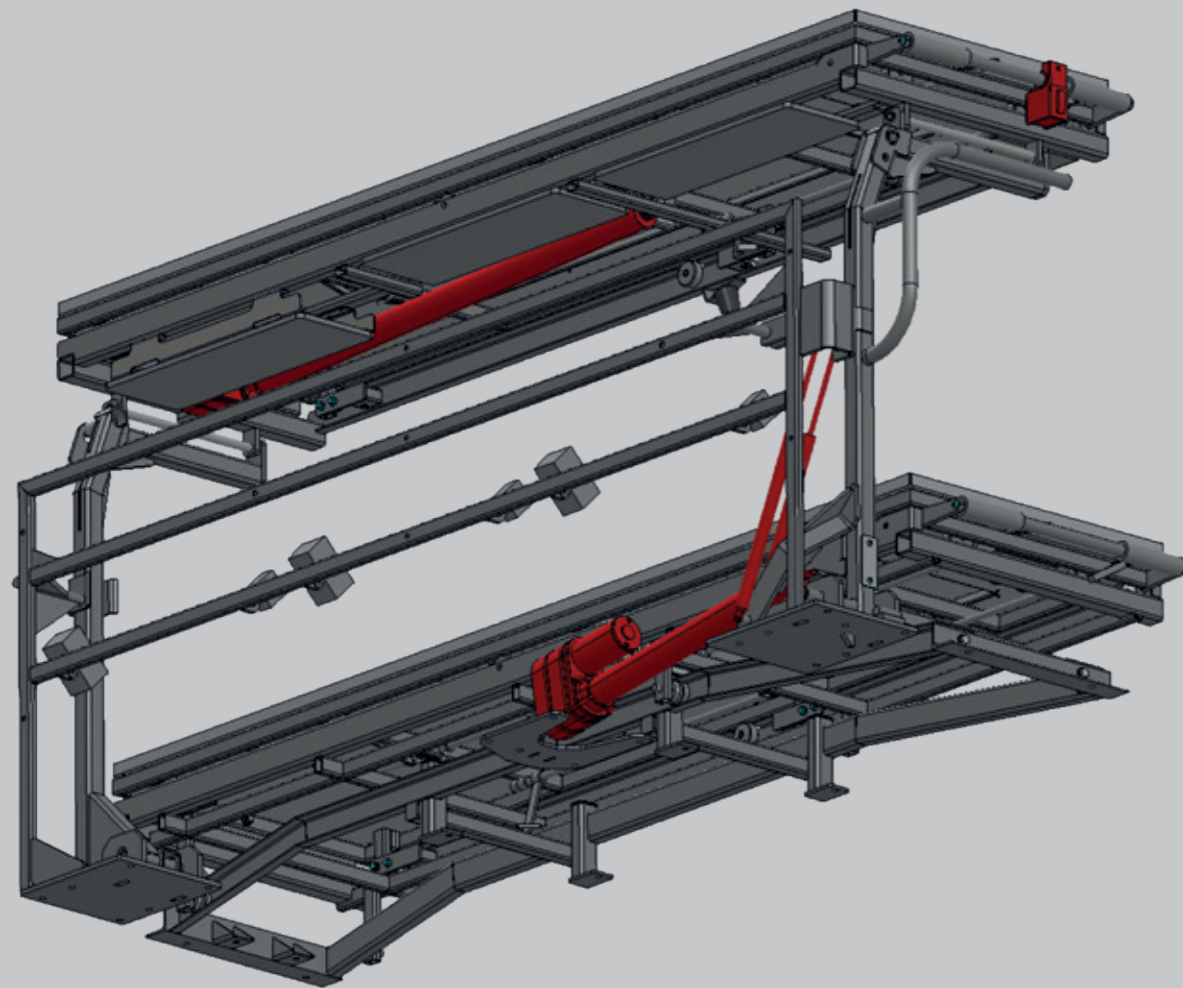
The overall design is optimized for the lowest possible weight.



One-Touch-Click Technology™

Safe, quiet and fast – innovative electric stretcher lowering and extending system.

The electric actuators used ensure the stability of the upper stretcher in any position. The actuators consume little electricity, thus allowing simultaneous operation of the left and right stretchers without the risk of overloading the electrical system. Powerful gas springs allow emergency loading of loaded stretchers without assistance.



One-Touch-Click Technology™ – an innovative and intuitive control system for lowering and extending the upper stretcher.

Depending on your needs, we can setup it according to your wishes. The system may even execute the entire cycle of lowering or raising the stretcher at a single push of a button. At that time, the crew may already take care of other tasks.

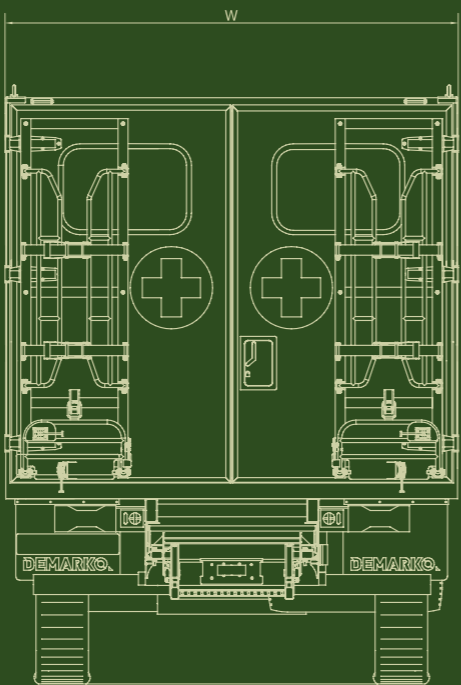
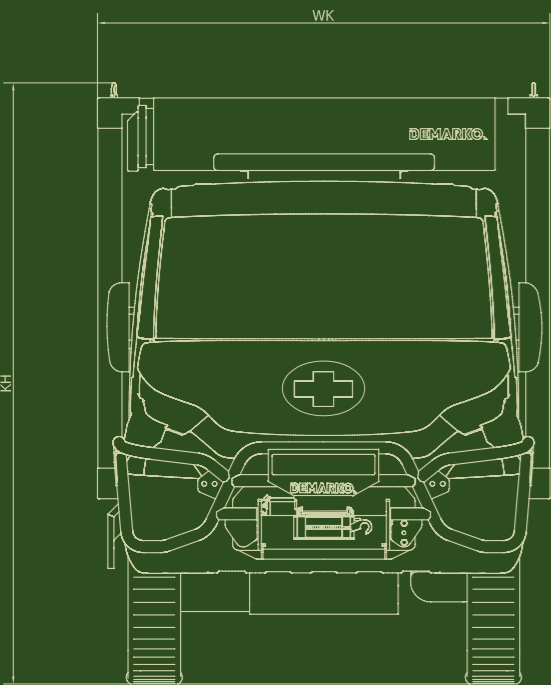


One-Touch-Click Technology™

Ambulance

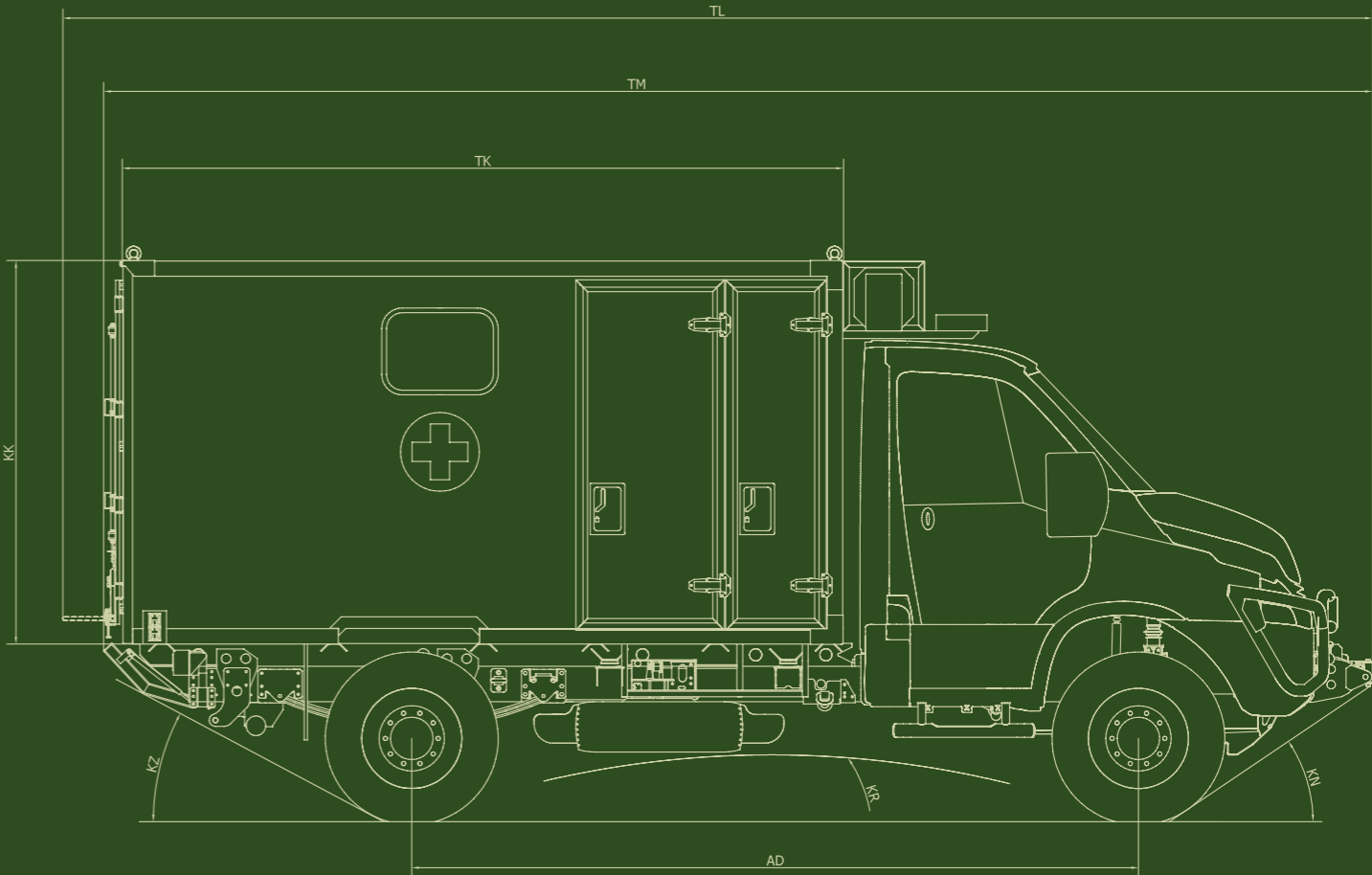
70W18EIII

2023



BASIC PARAMETERS

TL	Total length	6872 mm	Vehicle weight	5600 kg
TM	Minimum length	6600 mm	Vehicle GVW	7000 kg
KH	Total height	2990 mm	Engine power	180 km
AD	Wheelbase	3780 mm	Combustion standard	EURO III
W	Minimum width	2200 mm		
P	Clearance	360 mm		
KN	Entry angle	30°	TK	Container length
KR	Ramp angle	20°	WK	Container width
KZ	Departure angle	25°	KK	Container height



1
CONTAINER

The container optimally maintains the off-road properties of the vehicle while providing maximum space in the medical compartment. The vehicle's total height is compliant with EN-1789+A2, thus allowing the use of medical transport airlocks.

2
FILTER VENTILATION

Filter ventilation system to ensure the safety of persons in the vehicle cabin and medical container. The system meets the requirements of Defense Standard NO-42-A213.

3
CABIN

A comfortable cabin ensures the driver's comfort known from modern vans. An automatic air conditioning system, independent heating, and an electropneumatic drive engagement system turn driving in the toughest terrain into a pleasure.

4
ENGINE

Proven, reliable diesel engine, adapted to the use of NATO F-34 battlefield fuel, meeting the EURO III standard. The 132 kW of power and 420 Nm of torque ensure a high top speed and excellent dynamic characteristics of the vehicle.

5
LIGHTING

Black-out system. The vehicle is equipped with an extensive lighting camouflage system that complies with the STANAG 4381 standard.

6
ROBUST CONSTRUCTION

High-strength steel frame, 4x4 powertrain equipped with a gear reduction box and differential locking system.



1
ONE-TOUCH-CLICK TECHNOLOGY™
New, intuitive, safe and easy-to-use upper stretcher control system.

2
HEATING
Efficient heating, using two Airtronic furnaces with a total output of 9 kW. It is controlled by a convenient-to-use panel.

3
ERGONOMICS
The stretcher on the left side can be folded, thus obtaining the ability to transport three people in a sitting position.

1

2

3

4

5

6

4
LIGHTING
LED lighting of the medical space with adjustable intensity. The lamps have a camouflage lighting function.

5
ELECTRICS
Medical space equipped with a 230V single-phase AC power system with a frequency of 50Hz. The system's parameters and available power of 2300 W allow powering medical equipment without additional accessories.

6
FURNITURE SYSTEM
Light and spacious furniture. Optimized for ergonomics and easy maintenance.



The vehicle is equipped with mobile and portable radios to keep the crew connected in any situation



Widened cabin entry step allows quick and safe entry and exit of the vehicle.



Easily accessible spare wheel.



Expandable container entry step for convenience when entering and exiting the medical space.



A powerful electric winch to provide assistance in difficult situations.







34

years of experience
in the automotive industry

40

engineers

200

employees

12

export countries

12000

specialized vehicles delivered

67%

clients by recommendation

20000m²

of production area

Cooperation:

Politechnika
Śląska

We hold the following certificates:

ISO 9001:2015, 3834-2

AQAP 2110:2016

LICENCE B-071/2018

NCAGE 99NMH

WSK 1334/W/2021

AQAP 2110:2016
PN-EN ISO 9001:2015

ID 9000001681



We are at your disposal

DEMARKO
Spółka Akcyjna

HEADQUARTER
& PRODUCTION FACILITY
ul. Sądowa 19
PL 41-605 Świętochłowice

PRODUCTION FACILITY BYTOM
ul. Kolonia Zygmunt 27, 31 B-C,
PL 41-909 Bytom

Tel. +48 32 770 01 12
Fax. +48 32 706 90 96
info@demarko-military.com

demarko-military.com



DEMARKO. MILITARY VEHICLES